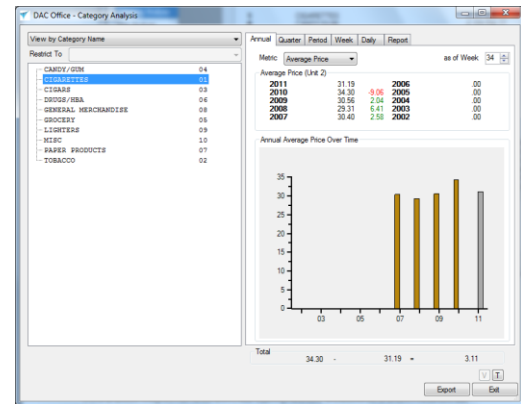


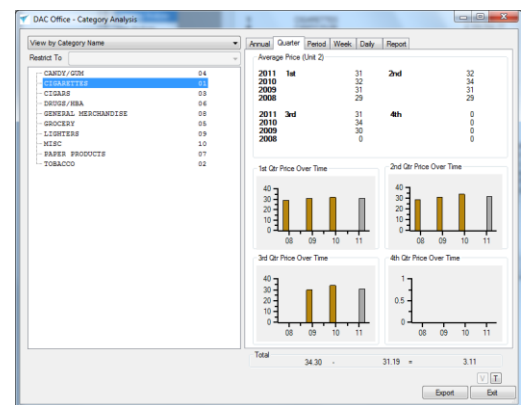
Annual Overview

The Category Analysis report shows how a category of products is doing over time. Using graphs, it's easy to identify trends and review progress. Select a category to see the annual comparison of the last 10 years. Select a Metric to review: Sales, Base Cost, Net Cost, Base Profit, Net Profit, Unit 1 Quantity, Unit 2 Quantity or Average Price. Change the "as of Week" drop-down box to review the data as of a specific week in time. Perform minor calculations by clicking on a numbers click on the numbers in the Total box to clear those values.



Quarterly Overview

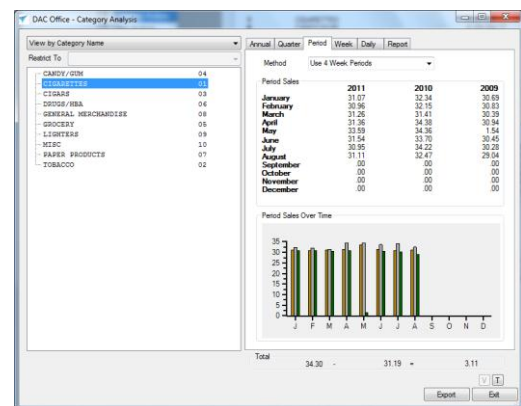
Click on the Quarter tab to see the comparison of the selected category and metric by quarter for the past 4 years.



Monthly Overview

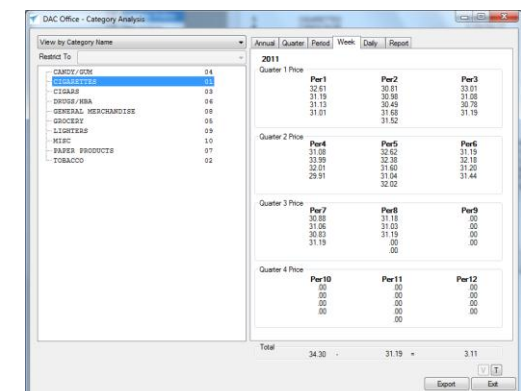
Click on the Period tab to see the comparison of the selected category and metric by period for the past 3 years. There are 13 weeks in each quarter so one period will contain 5 weeks. DAC Office gives you the ability to select where you want to put that 5th week by selecting it via the Method drop-down box.

- Use 4 week periods
- Put 5th week in 1st period
- Put 5th week in 2nd period
- Put 5th week in 3rd period



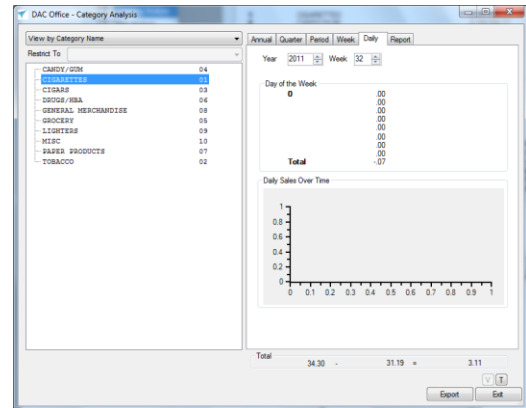
Weekly Overview

Click on the Week tab to see the comparison of the selected category and metric by week for the current year. In this example, we selected to "Put the 5th week in the 2nd period".



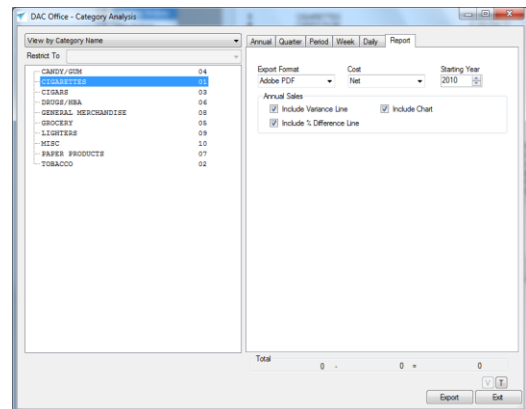
Daily Overview

Click on the Daily tab to see the comparison of the selected category and metric by day for the current year and week. Use the Year and Week drop-down box to review other weeks. ***TODO: see why this isn't working for Average Price.



Report Settings

Click on the Report tab to select the settings on how the report will be exported.



Exported Report

Click on the Export button to export the data to a PDF file. The report shows all categories compared annually starting with a selected "Starting Year". TODO: see why the starting year isn't working.

Category	Year	Sales	Cost	Profit	Profit	Quantity	Price	Profit
CANDY/GUM	11	119,856,377.80	99,154,616.87	20,701,760.93	17.27	2,607,403	45.97	7.94
	10	151,274.86	25,025.21	126,249.65	4.03	3,108	39.89	1.59
	+/-	-119,754,692.44	93,312,121.05	24,442,481.89	22.04	2,604,303	13.14	7.51
CHOCOLATES	11	830,695,929.41	122,526,167.53	8,169,761.82	6.25	4,190,606	31.13	1.85
	10	2,079,914.82	6,457,144.68	822,770.14	5.97	206,435	16.30	2.05
	+/-	-1,249,218,885.41	114,611,711.34	9,004,303.25	7.28	3,984,171	-3.11	-0.28
DRUGS/REBA	11	1,171,894.53	854,105.07	317,699.46	27.11	230,217	5.09	1.38
	10	0.00	0.00	0.00	0.00	1	5.09	1.38
	+/-	1,171,894.53	854,105.07	317,699.46	27.11	230,216	0.00	0.00
GROCERY	11	21,191,847.79	18,960,753.47	2,291,194.32	10.81	2,495,517	8.49	0.92
	10	275,217.28	242,133.18	33,084.10	9.85	20,930	12.14	1.07
	+/-	20,816,630.51	18,718,620.29	2,258,110.22	12.39	2,474,587	-3.64	-0.05
LIGHTERS	11	0,530,969.69	7,268,346.09	2,262,621.81	23.74	1,153,298	8.26	1.96
	10	1,814.50	1,361.96	472.54	25.76	415	4.42	1.14
	+/-	5,529,155.29	7,120,894.05	2,408,330.74	25.27	1,152,883	3.84	0.88
MISC	11	0.00	0.00	0.00	0.00	0	0.00	0.00
	10	0.00	0.00	0.00	0.00	0	0.00	0.00
	+/-	0.00	0.00	0.00	0.00	0	0.00	0.00
TOBACCO	11	16,991,028.48	14,607,301.74	2,383,726.74	14.03	931,291	18.24	2.56
	10	1,652.28	1,419.70	232.58	14.08	108	15.59	2.19
	+/-	16,989,376.20	14,605,882.04	2,383,494.16	14.03	931,183	18.24	2.56